

 **OPAL** 22

IN PARTNERSHIP WITH



STEPHEN LAWRENCE RESEARCH CENTRE



CULTURE COMICS

SCHOOL PACK

CULTURE COMIC GRAPHIC NOVEL COMPETITION



Supported using public funding by
ARTS COUNCIL ENGLAND

SCHOOL PACK

CULTURE COMIC
GRAPHIC NOVEL COMPETITION

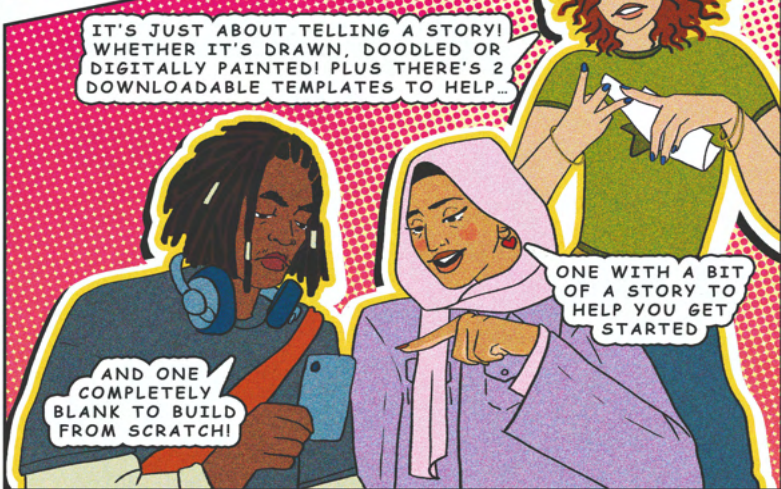
 **OPAL**²²



STEPHEN LAWRENCE RESEARCH CENTRE

TABLE OF CONTENTS

ABOUT THIS COMPETITION.....	4
TEACHER GUIDANCE DOCUMENT.....	5
GUIDELINES & RULES.....	6
SUBMISSION PROCESS.....	6
CONTACT INFORMATION.....	8



THE CULTURE COMICS GRAPHIC NOVEL COMPETITION INVITES CHILDREN AGED 12-18 FROM ACROSS THE UK TO CREATE ORIGINAL GRAPHICS AND STORIES BY ANSWERING TWO PROMPTS THAT EXPLORE THEMES RELEVANT TO SOCIETY TODAY.

AGES 12-15 PROMPT: "BLACK CULTURE IS...?" — THIS ENCOURAGES STUDENTS TO EXPLORE AND EXPRESS THEIR PERSONAL EXPERIENCES AND PERSPECTIVES ON BLACK CULTURE AND WHAT IT MEANS TO THEM.

AGES 16-18 PROMPT: "WHY VOTE?" — THIS QUESTION ENCOURAGES STUDENTS TO EXPLORE THEIR PERSONAL VIEWS ON VOTING, ALLOWING THEM TO REFLECT ON ITS SIGNIFICANCE AND SHARE THEIR PERSPECTIVES ON HOW VOTING CAN INFLUENCE CHANGE OR MAKE A DIFFERENCE IN SOCIETY.

COMPETITION OBJECTIVES:

- **FOSTER INCLUSIVE DIALOGUE:** GIVE YOUNG PEOPLE A PLATFORM TO EXPRESS THEIR VIEWS ON BLACK CULTURE AND SHARE DIVERSE CULTURAL NARRATIVES.
- **GAUGE AWARENESS AND INSIGHT:** UNDERSTAND THE PERSPECTIVES OF YOUTH NATIONWIDE ON BLACK CULTURE AND CIVIC ENGAGEMENT.
- **EDUCATIONAL GROWTH:** INSPIRE YOUNG PEOPLE TO REFLECT ON THEIR ROLE IN SOCIETAL CHANGE AND EXPLORE THE POWER OF THEIR VOICE, ESPECIALLY IN RELATION TO VOTING.

CURRICULUM BENEFITS:

THE COMPETITION ALIGNS WITH THE CITIZENSHIP CURRICULUM, ENCOURAGING REFLECTION ON DIVERSITY AND PERSONAL IDENTITY WHILE CELEBRATING THE UNIQUE VOICES OF STUDENTS

CULTURE COMICS



About Opal22

Opal22 Arts and Edutainment is more than an arts and heritage organisation, it is a collective of creators and custodians of the past, present and future. With a passion for crafting timeless projects, Opal22 curates experiences that inspire communities. Established with a dedication to preserve history, and celebrate heritage, Opal22 continues to connect stories, art, and heritage to build bridges across eras connecting threads that define our society.

About the Stephen Lawrence Centre

The Stephen Lawrence Research Centre (SLRC) is dedicated to advancing research on race and social justice, inspired by the enduring legacy of Stephen Lawrence and his family's fight for justice following his tragic murder. Rooted in archival materials loaned by Baroness Doreen Lawrence, the SLRC serves as a hub for innovative thinking, fostering intergenerational and inclusive research communities. By engaging academics, students, and local and global audiences, the SLRC raises awareness, debates critical issues, and drives meaningful conversations to create positive societal change.



INTRODUCTION FOR TEACHERS

PURPOSE: ENCOURAGE PARTICIPATION IN THE CULTURE COMICS COMPETITION TO FOSTER STUDENT CREATIVITY, EMPATHY, AND REFLECTION ON CULTURAL AND CIVIC THEMES.

KEY TALKING POINTS:

1. THE COMPETITION OFFERS A CHANCE TO ENGAGE WITH IMPORTANT THEMES SUCH AS BLACK CULTURE, DIVERSITY, AND CIVIC RESPONSIBILITY.
2. STUDENTS SHOULD RESPOND TO THE PROMPTS CREATIVELY WHILE CONNECTING WITH CULTURAL HISTORY AND CONTEMPORARY ISSUES.
3. CREATIVITY IS KEY. THEIR STORIES CAN BE ABOUT ANYTHING, FICTION, OR NONFICTION, DRAWN IN ANY STYLE, SO LONG AS THEY RELATE TO THE BRIEF.
4. EMPHASIZE THAT STUDENTS' UNIQUE PERSPECTIVES AND VOICES MATTER MOST, NOT ARTISTIC SKILL.

PRIZES

- TOP 50 ENTRIES WILL BE INVITED TO A WORKSHOP SESSION WITH COMICS LAUREATE BOBBY JOSEPH
- TOP 50 ENTRIES WILL BE PUBLISHED INTO A GRAPHIC NOVEL ANTHOLOGY AND SHOWN IN A PUBLIC EXHIBITION.

SUPPORTING STUDENTS:

PROMPTS:

- **"BLACK CULTURE IS?"** — CONSIDER ANCIENT TALES, MYTHS & LEGENDS, PERSONAL EXPERIENCES, CELEBRATIONS, OR MOMENTS IN HISTORY.
- **"WHY VOTE?"** — CONSIDER BARRIERS TO VOTING, MISINFORMATION, LACK OF UNDERSTANDING, DISCONNECT FROM THE SYSTEM. ALSO CONSIDER CHANGES THAT COULD EMPOWER YOUNG PEOPLE TO VOTE CONFIDENTLY.

BE MINDFUL OF OWN BIASES & ENCOURAGE STUDENTS TO EXPRESS FREELY

RESOURCES

- **TEMPLATES:** PRE-START AND BLANK TEMPLATES FOR DIFFERENT AGE GROUPS TO HELP STUDENTS BEGIN THEIR GRAPHIC NOVEL ENTRY
- **VIDEO MESSAGE:** SPECIAL MESSAGE FROM GRAPHIC NOVELIST & COMPETITION JUDGE BOBBY JOSEPH, SHARING INSIGHTS ON STORYTELLING AND MOTIVATING STUDENTS TO BRING THEIR UNIQUE VOICES TO LIFE.

IN-CLASS ACTIVITIES (OPTIONAL):

- **BRAINSTORMING SESSION:** DISCUSS PROMPTS AND ENCOURAGE REFLECTION.
- **PEER REVIEW:** ALLOW STUDENTS TO SHARE IDEAS AND RECEIVE CONSTRUCTIVE FEEDBACK FROM PEERS.

ELIGIBILITY:

OPEN TO STUDENTS AGED 12-18 ACROSS THE UK.

SUBMISSION REQUIREMENTS:

- MAXIMUM 2 A4 PAGES PER PERSON.
- SUBMISSIONS MUST INCLUDE ORIGINAL WRITING AND ARTWORK.
- ONE SUBMISSION PER PERSON.
- USE ANY MEDIUM: PENCILS, PENS, STICK FIGURES OR DIGITAL SOFTWARE.
- AI-GENERATED CONTENT WILL NOT BE ACCEPTED.
- INCLUDE NAME, TITLE OF STORY & AGE ON SUBMISSION

SUBMISSION PROCESS

HOW TO SUBMIT

- SELECT A TEMPLATE
- CREATE YOUR GRAPHIC NOVEL STORY
- ENSURE IT MEETS THE GUIDELINES
- IF DIGITAL SUBMISSIONS UPLOAD TO THE LINK BELOW (PDF, JPEG, PNG)
- OR PHYSICAL, MAIL TO:
OPAL22
STUDIO 9, PHOENIX STUDIOS
253-255 BELGRAVE GATE
LEICESTER, LEICESTERSHIRE
LE1 3HU

COMPETITION TIMELINES

COMPETITION OPENS: 1ST DECEMBER 2024
DEADLINE: 2ND MARCH 2025.

FOR MORE INFORMATION: VISIT

[HTTPS://OPAL22.CO.UK/CULTURECOMICSGRAPHICNOVELCOMPETITION/](https://opal22.co.uk/culturecomicsgraphicnovelcompetition/)
OR SCAN TO ACCESS FULL SUBMISSION GUIDELINES AND VIDEO RESOURCES.





CULTURE COMICS

CONTACT INFORMATION

EMAIL: INFO@OPAL22.CO.UK

PHONE: 0116 248 7196

WORKING HOURS:

MONDAY TO THURSDAY 9:30 AM - 5:00 PM

FRIDAY 9:30 AM - 3:00 PM

THIS SCHOOL PACK IS DESIGNED TO SUPPORT TEACHERS IN GUIDING STUDENTS THROUGH THE CULTURE COMICS COMPETITION AND TO ENCOURAGE CREATIVITY, DIALOGUE, AND SELF-EXPRESSION IN A FLEXIBLE WAY THAT FITS DIVERSE LEARNING ENVIRONMENTS.



Supported using public funding by
**ARTS COUNCIL
ENGLAND**